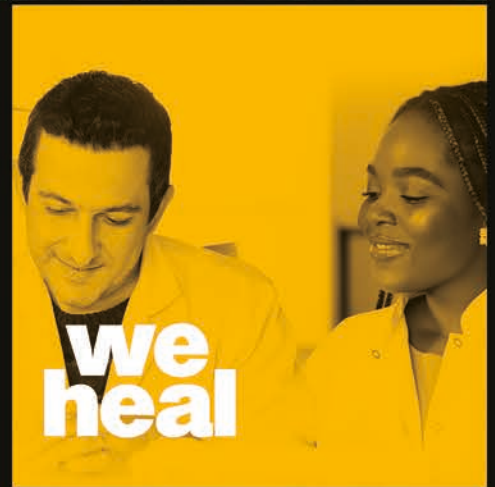


Eastern Mediterranean *University*



GRADUATE
PROSPECTUS 2021/22



Eastern
Mediterranean
University



**we
are
emu**





Dear Students,

Since the day you were born, education has been a part of your life. Every individual is unique and you have many traits and skills that make you who you are. The important thing is to unveil these features.

While the new world order is being established, many structures have undergone changes. Technology has developed, opportunities for accessing information have changed, new professions have emerged, and the value of arts, sports, personal development and cultural interactions has increased. Within this structure, needs and expectations have changed in parallel with the societies. You will shape your own future in accordance with these developments.

Today, you are at an important point regarding a decision you are about to make concerning your life. This decision of yours will be an important tool in reaching your targets in life. With every step you take, you should feel that you are one step closer to your goal and plan, believe and work harder to achieve it.

In your career choices, it is of great importance that you are at a place that reveals the features that make you yourself; a place where you are happy while producing, where you will make your dreams come true, and where you feel you are the best. You should have a good evaluation of the opportunities offered to you to receive quality education, to become a well-equipped individual, to be familiar with the requirements of multicultural systems, to engage in activities that will play an important role in your personal development, to be interested in arts and sports, to make new friendships in a multinational environment and sail towards new horizons.

The Eastern Mediterranean University is the first state university of the Turkish Republic of Northern Cyprus (TRNC). With its advanced infrastructure compatible with the requirements of the age, prominent faculty, programs providing high quality education opportunities in English and Turkish-medium, student exchange programs, rich sports, social and cultural activities, Eastern Mediterranean University offers you a great opportunity in your career plans.

EMU boasts a multicultural and international structure with students from 109 different countries around the world. With our internationally recognised and valuable diploma, we are a university that closely follows the achievements of its graduates at the international arena. We work with all our strength for young people who are creative, productive, have analytical thinking skills, are entrepreneurs, keep up with the expectations and competitive environment of the global system, and develop themselves in different fields. We invite you to be a member of this powerful institution where you can improve your individual characteristics and receive education in a quality academic environment that offers opportunities to make you have a say in the international arena. You can take your power from us as you shape your future.

With my best wishes,

Prof. Dr. Aykut Hoca'nın
Rector



Eastern Mediterranean University

Our Vision

The vision of Eastern Mediterranean University is to provide high quality education based on scientific production, and to become a leading and the most preferred university by students and faculty members within its unique geographical location which joins three continents.

Our Mission

The Eastern Mediterranean University has set as a mission becoming a university acting in line with universal values, guided by internationally recognized academic criteria, providing solutions for regional and international problems with a sense of social responsibility, raising graduates who have internalized multiculturalism, free thought, tolerance and participation as well as carrying out work to make international improvements in the fields of production, science, arts and sports.



About EMU

The Eastern Mediterranean University (EMU) located on the Mediterranean Island of Cyprus was established in 1979 in the Turkish Republic of Northern Cyprus (TRNC) as an institution with the purpose of educating and establishing human resources for a newly-established country. Over the years not only has EMU grown exponentially to claim its position as an internationally recognized state university of the Turkish Republic of Northern Cyprus, with over 64,000 graduates and currently providing education to over 16,000 students, it has also earned its place as a world-wide renowned university, where the medium of conduct is English. EMU prides itself in the quality it offers during the learning experience of each and every one of the students that have passed through its doors. We are proud to be ranked in the 801-1000 band in the Times Higher Education Ranking University and are simultaneously ranked in the 251-300 Young Universities band. EMU provides education to students with a plethora of internationally recognized and awarded accreditations to its name. With over 107 undergraduate programs, 103 postgraduate programs and up to 100% Scholarships for international students, this world ranking university is not only the ideal location to take your next step towards your future international career, but also provides a unique experience to obtain a prestigious degree from a world-class institution.



EMU's Pride



#1 University in North Cyprus

#1 University in Cyprus
Global Ranking of Academic Subjects 2020

#1 University across Cyprus
Nature Index Ranking 2020



801-1000 'THE' World University Rankings

301-400 'THE' Impact Ranking

251-300 'THE' Young Universities Rankings

601-800 Engineering and Technology Ranking (2021)

401-600 Physical Sciences Rankings (2021)

401-500 Business and Economics Rankings (2021)



Impact Ranking

601+ Partnership for the Goals (2020)

201-300 Decent Work and Economic Growth (2020)

301-400 Peace, Justice and Strong Institutions (2020)



4 Stars

QS World University Rankings 2021

#17 EECA (Emerging Europe and Central Asia)

EMU

in Numbers



81%

International Students



64,000+

Alumni



16,000+

Enrolled Students



70+

Student Societies and Clubs

12

Faculties



4

Schools



109

Nationalities

107

Undergraduate
Programs

103

Postgraduate
Programs

500+

Faculty
Members

42

Year old
University

22

Research
Centers

+11,000

On Campus Bed
Capacity

EMU

Global

38

Student Exchange
Partners

11

Joint and Dual
Programs

14

Double Major
Programs

MESSAGE FROM *the Director*

Dear Students and Prospective Students,
The Eastern Mediterranean University, as the most rooted institution of higher education at the Turkish Republic of Northern Cyprus as well as a world university, offers postgraduate and doctoral study opportunities to students from more than a hundred different countries with its advanced infrastructure, educational accumulation and quality, rich sports, social and cultural activity possibilities, international accreditations, an international environment, a valid diploma recognized throughout the world and qualified faculty. Whilst the Eastern Mediterranean University, through its master's programs, aims to bring up the students as entrepreneurs who are ready to compete at the global level, able to produce solutions to problems, have skills for research and analytical thinking, are open to development and progress and act in line with ethical values, the university, through its doctoral programs, also has the goal of educating them as scientists who are

fully-equipped for the academic life to make a universal contribution to science.

As a result of the scientific studies emerging in line with these goals, Eastern Mediterranean University achieves higher and higher in the world rankings every year.

The postgraduate students of the Eastern Mediterranean University have the opportunity to pursue their studies in the rich and dynamic master's and doctoral programs offered in Turkish and English-medium, with and without thesis options and with faculty members who are experts in their fields and can easily communicate with students. We are awaiting to welcome the student candidates who are planning to study in the graduate programs of the Eastern Mediterranean University as a member of the EMU family. I wish you every success in your studies.

Prof. Dr. ALİ HAKAN ULUSOY
Director



OUR ROLE

The Institute of Graduate Studies and Research is responsible for overseeing, processing and coordinating matters concerning graduate admissions, assistantships, thesis proposals and defenses, supervisions, and examinations, subject to the by-laws of the University and the regulations laid down by the University Senate. The Institute serves to maintain quality in graduate education by adapting universally accepted academic principles and criteria.



OUR ACADEMIC SUPPORT

Getting Settled: We help you settle at EMU by guiding you from arrival at the airport through to registration to your program. We also have a strong contact team to support and guide you during online applications and procedures from wherever you may be.

Library: Eastern Mediterranean University Library supports the education and research activities of the university with its materials and information services. The Library houses a collection of more than 150,000 books, thousands of audio-visuals, and around 300 periodical subscriptions. The Library has membership in more than 50 online databases that allow access to full-text Journals, Reports, Abstracts, E-Books, E-Theses Reviews, Indicators, Statistical Data, Working Papers, Standards as well as bibliographical information resources.

English: Students wishing to improve their English Language Level may register for English elective courses listed below after meeting English requirement conditions at first enrollment:

Classes: Our academic staff is committed to providing both first-class education and research that makes a difference. The faculty members have a wide range of faculty research interests that allow the practice of interdisciplinary research besides classical research areas. Also, our academic staff is approachable and always ready to help you meet and exceed your own expectations. Classrooms are well equipped and provide a modern learning environment. Online Courses are provided through Learning Management System where students are given access to course resources or materials, as well as a platform for easy interaction from any place they may be located.

Labs/Studios: Each faculty is equipped with labs and/or studios that help students acquire procedural skills. The labs and studios are places where the students can observe, practice, explore and solve problems (whether scientific or artistic). Students are coached by their instructors, a process in which they practice handling tools and techniques to enable greater independence through participation.

ENGL 521	Advanced English for IELTS	Elective course for students who want to take the IELTS exam.
ENGL 523	Thesis Writing for Postgraduate Students	Elective course on thesis writing for 2nd year and PhD students.
ENGL 525	Advanced Presentation Skills for Postgraduate Students	Elective course on presentation skills, including thesis defense for 2nd year and PhD students.
ENGL 528	Legal English and TOLES	Elective course on Legal English and TOLES. TOLES, is an internationally-recognized exam testing legal English skills.

Financial: EMU has a variety of financial support from which students may benefit during their graduate studies. For scholarships, students can only benefit from one at a time. The table

below gives short information on the nature of the financial support.

Support	What is the criteria?	Who's eligible?	What's the coverage?	What's the duration?	When to apply?	Where to apply?
GRADUATE SCHOLARSHIP *	3.00 (out of 4.00) or higher undergraduate graduation CGPA. The departments will rank the applicants based on their departmental assessment criteria (not only CGPA)	PhD Level: International or Turkish Republic (TR) citizens Master's Level: International or Turkish Republic (TR) citizens	100 % or 50 % tuition fee waiver (Ph.D. level), 100 % or 50 % tuition fee waiver (TR citizens Master's level) 50% tuition fee waiver (International student Master's level)	The standard period of study specified for the registered program (in extended semesters scholarship reduces to half)	During the specified scholarship application period.	Online program application system (https://applyonline.emu.edu.tr)
TRNC GOVERNMENT SCHOLARSHIP	Scholarships are granted by the TRNC to students from third countries (other than TRNC and Turkey) based on the criteria specified Scholarship Committee	All International Students	Covers tuition fees, dormitory fees plus USD 200 allowance (pocket money) per month	The standard period of study specified for the registered program + one additional year at the English Preparatory School if necessary (summer semesters excluded)	After Acceptance to an Academic Program	TRNC Ministry of Education or TRNC Consular Mission abroad
STUDENT ASSISTANTSHIP	Based on criteria specified by the hiring department in the university	All Students with a GPA above 2.00 (but this option is generally for undergraduates)	A monthly stipend based on hourly rates	Determined by the hiring department in the university	Vacancies are usually announced throughout the year.	The hiring department in the university
RESEARCH ASSISTANTSHIP	Regulated by "Regulations for Research Assistant Appointment and Postgraduate Scholarship Implementation"	All Graduate Students with a minimum CGPA 3.00 or above from previous degree. For lower CGPA please read the regulation.	Tuition fees waiver and a salary based on the category	The standard period of study specified for the registered program	Vacancies are usually announced before the commencement of the semester	The hiring department in the university
SPORTS GRANT	The scope of the grant, duration and conditions are regulated by the principles for "Eastern Mediterranean University Sports Grants Application"	Students with exceptional performance in individual or team sport	Covers full or partial tuition fee and/or free accommodation in EMU Dormitories	Regulated by the principles for "Eastern Mediterranean University Sports Grants Application"	Any Time	EMU Sports Directorate
DISCOUNTS	Not Applicable	Siblings who study at EMU undergraduate or associate degree programs	Postgraduate: 10% tuition fee waiver for siblings enrolled in a postgraduate program and have no other form support	Continues until the graduation of the student	Any Time	EMU Accounting Office
SOCIAL AIDS	Have Proof of Financial Constraints	All Registered Students with min GPA 2.00 (undergraduate) and 3.00 (graduate)	Partial coverage of Tuition Fees, Dormitory fees or Free Meals	To be determined by the evaluating committee	Announced on the students portal	Vice Rector's Coordinator Office for Students Affairs
Type C (BAP-C) Scientific Research Project	The scope of the grant, duration and conditions are regulated by the principles for "Eastern Mediterranean University Scientific Research Support Principles"	For PhD programs: successful performance at PhD Qualification Exam and the approval of the thesis proposal by the thesis monitoring committee and the relevant postgraduate committee. For Postgraduate programs with no thesis: may apply for their term projects during the semester of registration.	All expenses necessary for the successful completion of the approved project may be supported, on the condition that the budget has not been exceeded.	The project period is maximum 1 year. An extension of 6 months may be granted two times at most	Project applications are accepted twice a year. Application periods for projects are determined by the Academic Evaluation	Fill in the "Project Application Form" and submit all required documents to the Faculty Dean's Office or School Directorate of the postgraduate student involved in the project.
Conference Support	The scope of the grant, duration and conditions are regulated by the principles for "Eastern Mediterranean University Scientific Research Support Principles"	Doctoral degree candidates (Ph.D. students who have successfully passed the qualifying exam) and research assistants.	Specified at the beginning of each academic year and proposed to the Rector's Office.	One-time payment	During the academic year on a periodical basis	Fill in the "Financial Support Request Form for Academic Conference" and submit all required documents to the relevant Department Head and Dean/Director.
Publication Awards	The scope of the grant, duration and conditions are regulated by the principles for "Eastern Mediterranean University Scientific Research Support Principles"	Both PhD and Master's program students	Specified at the beginning of each academic year and proposed to the Rector's Office.	Payment upon approval of each application	During the academic year	Fill in the "Application Form for Publication Award" and submit all required documents to the relevant Department Head and Dean/Director.

* Scholarship criteria and coverage are subject to change for each academic year.

Career: The Alumni Relations and Career Research Directorate (known as MIKA) offers consultancy services for students both during their study period and following their graduation.

The diploma of EMU is internationally recognized and diploma approval procedures are also managed by MIKA following the graduation ceremony.

EMU Alumna:

Evisi Kopliku

Expert on Competitiveness at
the Regional Cooperation Council (RCC)
Albania

"I arrived in Cyprus in 2005 and completed both a bachelor's and master's program in Banking and Finance (currently named Finance and Banking) in 2010 as a high honor student. During my master's program, I was given the opportunity to work as a teaching assistant and as Banking and Finance master's program coordinator. It was an enlightening experience as I realized that I liked teaching and doing research.

EMU is not only a place for good education, but also an environment of rich life experience – learning how to live in a community surrounded by international friends. The academic staff was not only good at teaching, but also good counselors. Even after more than a decade since I graduated from EMU, they are always available and happy to help.

After returning to Albania, I worked a few years as an instructor in universities, teaching, doing research, and at the same time being part of NGO's. Later, I worked in the government for 7 years first as Economic Advisor to the Minister of Economic Development, then as Director of the European Integration and Project in the same ministry, and later in the Ministry of Tourism and Environment. Presently, I am working as an Expert on Competitiveness at the Regional Cooperation Council.

If I were asked to choose a university again, I would with no doubt choose the same program at Eastern Mediterranean University."

International Accreditations



OUR COURSES

Program Length:

Master's with thesis: Minimum 2, maximum 4 semesters (+ possible 2 semester extensions only for thesis registration)

Master's without thesis: Minimum 2, maximum 3 semesters (no possible semester extension)

Ph.D.: Maximum 10 semesters (+ possible 2 semester extensions)

Note: Those semesters registered ONLY to deficiency and English Support courses (ENGL509/511/513/515) are not included in the maximum duration allowed to complete the given graduate program.

Scientific Preparation Program (Deficiency Courses):

Students may be subject to the Scientific Preparation Program if they are coming from a different field or need to improve the level of their knowledge in certain subjects. The

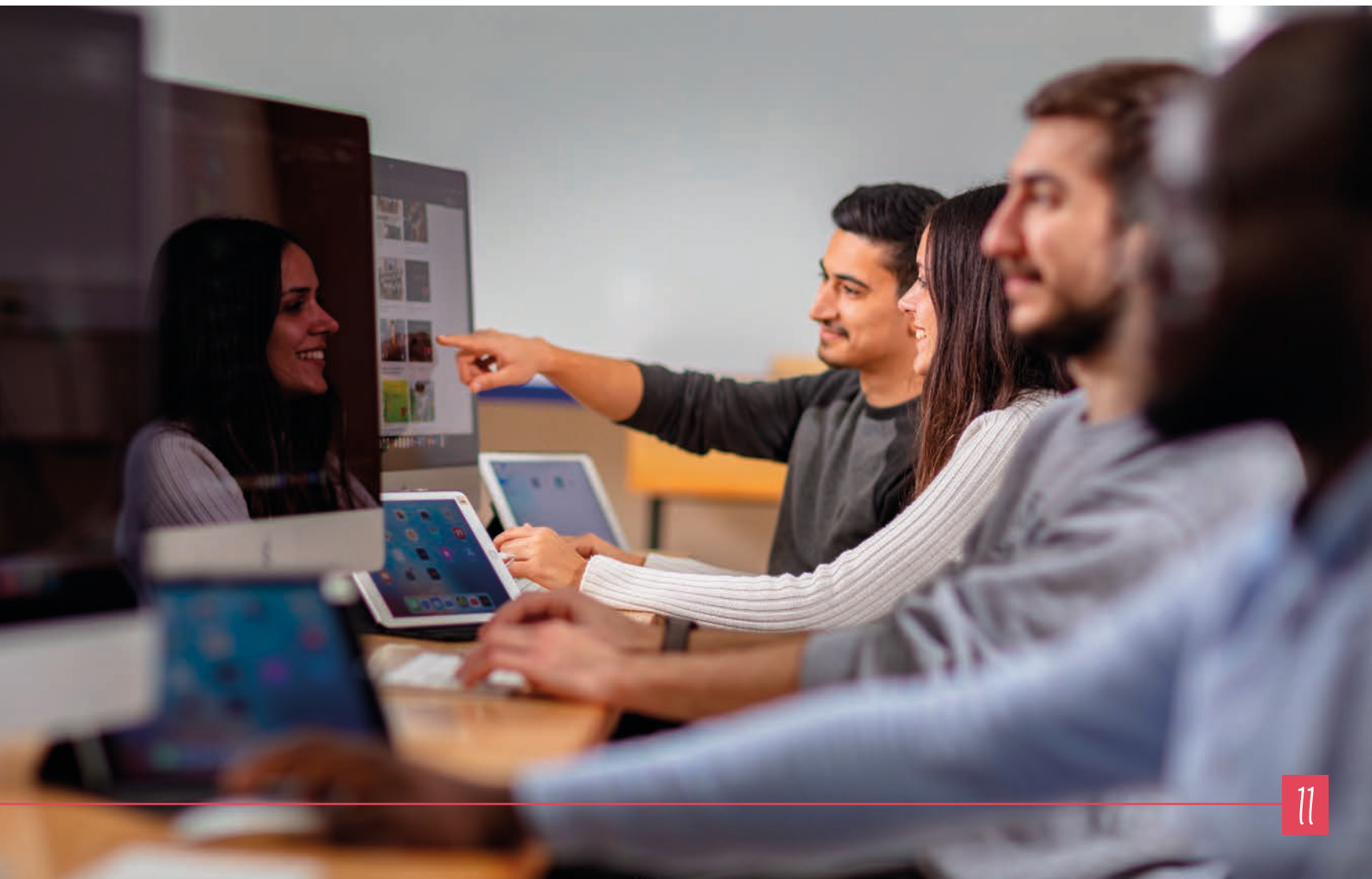
program needs to be completed at most in two semesters most often prior to program courses. Summer instruction cannot be included in this duration.

When and How to Apply:

EMU does not charge any application fee and applications are accepted twice a year for Fall and Spring semesters. Applicants are advised to make their applications by the end of December or August for Spring or Fall Semester, respectively.

Application deadlines are announced on the website of the Institute. Prospective applicants are required to apply online

<https://applyonline.emu.edu.tr/grad/>.



Application Documents:

A list of documents needed for application is given below:

1. An official transcript of all university-level (Bachelor / Master) courses taken. A comparative mark/grade table if CGPA on the transcript is not out of 4.00.
2. Attested photocopies of diplomas received from a university or equivalent institutions (i.e. 4 years study bachelor degree). English translations of these documents are necessary if they are in any language other than English.
3. If any, documentation of scores received for English and academic proficiency exams/tests. Native speakers should indicate the place of birth and citizenship. All others should provide documents of any one of the required English Proficiency Tests.
4. Documents
 - a. Statement of Purpose / Intention (Please submit on a separate sheet: Your purpose in applying to the chosen program, explaining your motivation as well as the areas of specialization which would be of interest to you within the discipline).
 - b. A photocopy of your passport or I.D. card.
 - c. A passport-sized (approx. 6 cm x 5 cm) photograph.
 - d. Program specific documents: Architecture (Ph.D. & Master): Portfolio.
 - e. Proposal (for PhD program applications)

Online Application and Registration procedures:

Application:

1. Check out about our university's programs available at www.emu.edu.tr/programs,
2. Find the programs that you are interested in (you may apply at most to 3 different programs during one application),
3. Apply online,
4. Check your admission status. You will receive your e-signed acceptance letter once your admission is completed and you may proceed with the registration procedures.

Please contact us by email registrar@emu.edu.tr for any problems and/or enquiries.

<https://grad.emu.edu.tr/en/admission/registration>

Registration:

1. Log into the Student Portal (<https://stdportal.emu.edu.tr/>) with your student number and password stated in the acceptance letter(s) you received from our university,
2. If you have been accepted into one or more programs, select and approve the program you wish to study.
3. Go to the 'Financial' section and check your tuition fees status. You can pay online by debit/credit card or via bank (bank receipt should be uploaded), and payments can be made in full or in installments,
4. Once your payment has been processed, apply for a Student Certificate via the Online Document Application ('Personal' section). This document will allow you to apply for the 'ok to board' travel document,
5. During the registration period, click on semester courses in the 'Academic' section and select your courses,
6. Become part of EMU family and enjoy your studies.

Scientific Preparation Program (Deficiency Courses):

Fees for graduate programs are calculated based on the structure of the program to which the students enroll. Thus, the semester fee calculation is done as follows:

(per course fee x number of courses)
+ thesis fee (if registered)
+ funds.

However, new students need to deposit a certain amount of fee plus the student fund at first enrollment. This amount is also required to get a confirmation of payment letter for visa purposes (please see your letter of admission). If your payment does not cover the number of courses you have registered, you will need to make an additional payment. If you register for fewer courses, then the remainder of your deposit will be counted towards future course registrations.

English Requirements:

For master's and PhD programs that are taught in English, evidence of English language ability is required. If you do not have a valid English language qualification that meets the EMU requirements presented in the table below, your level will be assessed by examination at EMU. For more detailed information, please visit;
<https://grad.emu.edu.tr/en/admission/english-language-requirement>

*According to a decision taken by the Student Selection and Placement Center (ÖSYM) on 14.02.2014, IELTS test scores cannot be used for exemption by Turkish citizens.

** Some graduate programs such as the Department of English Language Teaching (ELT) may apply a higher scale regarding English language exemption. Prospective students are advised to contact the relevant academic department for further additional rules and regulations.

Recognized English Language Tests	English requirements for English Medium Programs	Validity Period
	Minimum Score	
TOEFL (IBT)	79	2 years
IELTS (Academic) *	6.5	2 years
PTE Academic (PTE-A)	58	2 years
YDS/YÖKDİL	66	5 years
EMU English Language Exam	75 **	2 years

Visa Procedures:

If traveling for higher education, an official admission letter from the university will be requested to enter the country. You will also be requested to apply for a student residency permit within maximum 60 days upon arrival. Please consult TRNC

entry requirements with the nearest TRNC foreign mission/ representative or Turkish embassy.

See information at <http://www.mfa.gov.ct.tr>

Program Structure:

Master's with thesis

- Courses (Core & Elective)
- Seminar
- Thesis

Non-Thesis Master's

- Courses (Core & Elective)
- Term Project

PHD

- Courses (Core & Elective)
- Seminar
- PhD Qualification Exam
- Thesis proposal
- Thesis Monitoring (at least 3 Thesis Monitoring Committee [TMC] report)
- Published or to be published article & other academic activities
- Oral Thesis Defense



Graduate Programs:

All programs listed below are delivered in English language.

	Programs	Master's with thesis () Indicates the number of courses	Non-Thesis Master's () Indicates the number of courses	PHD () Indicates the number of courses
Architecture	Architecture	✓ (7)	✓ (10)	✓ (7)
	Cultural Heritage Studies	✓ (7)		
	Interior Architecture	✓ (7)	✓ (10)	
	Urban Design	✓ (7)	✓ (10)	
Arts & Sciences Faculty	Applied Mathematics & Computer Science (with Thesis)	✓ (7)		✓ (7)
	Chemistry	✓ (7)		✓ (7)
	General Psychology	✓ (7)		
	Information Systems		✓ (10)	
	Mathematics	✓ (7)		✓ (7)
	Medical Biotechnology		✓ (10)	
	Physics	✓ (7)		✓ (7)
Business & Economics Faculty	Finance			✓ (7)
	Finance and Banking (Online)	✓ (7)	✓ (10)	
	Finance and Banking	✓ (7)	✓ (10)	
	Business Administration	✓ (10)	✓ (12)	✓ (9)
	Diplomacy and Conflict Management	✓ (7)		
	Economics	✓ (7)	✓ (10)	✓ (7)
	Energy Economics and Finance	✓ (7)		
	Gender Studies	✓ (7)		
	Human Resource Management		✓ (10)	
	International Relations	✓ (7)	✓ (10)	✓ (8)
	International Trade and Business		✓ (10)	
	Marketing Management	✓ (8)	✓ (10)	
Communication and Media Studies Faculty	Communication and Media Studies	✓ (7)		✓ (7)
	Digital Media and Film		✓ (10)	
	Visual Arts and Visual Communication Design		✓ (10)	
Computing and Technology Faculty	Information Technology	✓ (7)	✓ (10)	
Education Faculty	English Language Teaching	✓ (8)	✓ (10)	✓ (8)
	Information and Communication Technologies in Education	✓ (7)	✓ (10)	✓ (7)
Engineering Faculty	Civil Engineering	✓ (7)		✓ (7)
	Computer Engineering	✓ (7)	✓ (10)	✓ (7)
	Electrical and Electronic Engineering	✓ (7)		✓ (7)
	Engineering Management		✓ (10)	
	Industrial Engineering	✓ (7)	✓ (10)	✓ (7)
	Mechanical Engineering	✓ (7)		✓ (7)
Law Faculty	Comparative Legal Systems (Joint Program with University of Bologna)		✓ (10)	
Tourism Faculty	Hotel Management (Online)		✓ (10)	
	Tourism Management	✓ (7)	✓ (10)	✓ (7)
Collaborative Program with University of Warwick	MSc Engineering Business Management MSc Supply Chain and Logistics Management	For more information about the program and courses, please visit warwick.emu.edu.tr		

Note: For updated new program list and Turkish taught programs please visit <https://grad.emu.edu.tr>.

A photograph of two men in a workshop or office setting. The man in the foreground is wearing glasses and a light-colored t-shirt, looking down with a slight smile. The man in the background is also wearing glasses and a patterned shirt, holding a marker and looking towards the camera. The entire image is overlaid with a red tint and a halftone dot pattern.

**we
research**

ACCREDITATIONS, MEMBERSHIPS, CERTIFICATIONS, AND APPROVED CENTERS

Accreditation assures that a university program prepares graduates for their future career. The Eastern Mediterranean University and all its undergraduate and graduate programs are accredited by the Turkish Higher Education Council (YÖK) and EMU works within the framework of YÖK Rules and Regulations.

Additionally, many of our programs are further accredited by major international accreditation bodies and these accreditations are universal. By having these accreditations, graduates can easily find a job and be mobile all around the world.



University Level Accreditations



YÖK - Turkish Republic
Higher Education Board



YÖDAK - Higher Education
Planning, Inspection, Accreditation
and Evaluation Board

Faculty, Department and Program Level Accreditations



Engineering
Accreditation
Commission

ABET - The Accreditation
Board for Engineering and
Technology



SABAK - Sağlık Bilimleri Eğitim
Programları Değerlendirme
ve Akreditasyon Derneği



AQAS - Agency for Quality
Assurance through Accreditation
of Study Programs



PCN - Pharmacists Council
of Nigeria



ASIIN - Accreditation Agency for
Degree Programmes in Engineering,
Informatics, Natural Sciences and
Mathematics



EQUANIE [Euro-Inf] - European
Quality Assurance Network for
Informatic Education



EPDAD - Öğretmen Eğitim
Programları Değerlendirme
ve Akreditasyon Derneği



FIBAA - Foundation for
International Business
Administration Accreditation



ICE - Institution of Civil
Engineers



MIAK - Mimarlık Akreditasyon
Kurulu (Architectural
Accrediting Board)



NAAB - National Architectural
Accrediting Board



TEDQUAL - Teaching
Education Quality in Tourism



UNWTO.THEMIS - The World
Tourism Organization



WACS World - Association of
Chefs Societies



TPD - Türk Psikologlar
Derneği (Turkish
Psychologists' Association)

Faculty, Department and Program Level Memberships



ACSA - Association of
Collegiate Schools of
Architecture



EAAE - European
Association for Architectural
Education



IFI - International
Federation of Interior
Architects/Designers



AMS - The American
Mathematical Society



ECPR - European
Consortium for Political
Research



PRME - Principles for
Responsible Management
Education



AACSB - Association to
Advance Collegiate Schools
of Business



EUPRERA - European Public
Relations Education and
Research Association



ICO-D - International
Council of Design



IAMCR - International
Association for Media and
Communication Research



ADEE - Association for
Dental Education in Europe



TESOL - International Association
of Teachers of English to
Speakers of Other Languages



IAEFL - International Association
of Teachers of English as a
Foreign Language



ESTIEM - European Students
of Industrial Engineering
and Management



EMT - Türkiye Endüstri
Mühendisliği Toplulukları
Birliği



WWD SIE - Worldwide Directory
of Systems Engineering and
Industrial Engineering Programs



ATLAS - Association for Tourism, and
Leisure, Education and Research



ELFA - European Law
Faculties Association



IEEE - Institute of Electrical
and Electronics Engineers



World Directory of Medical
Schools



FIP - International
Pharmaceutical Federation



IPSF - International
Pharmaceutical Students
Federation



EPSA - European
Pharmaceutical Students
Association



AEHT - European
Association of Hotel and
Tourism Schools

Faculty, Department and Program Level Certifications & Approved Centers



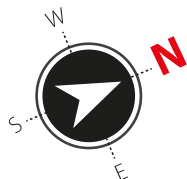
ETS - Educational Testing
Service



City & Guilds Centre
Approval
(Unique Centre No. 821314)



Edexcel - (Higher National
Diploma-HND-UK) Centre
Number 75973



- | | | | |
|--|-------------------------------------------------------------------------|--|--------------------------------------------------------------------------|
| | 1 Central Lecture Halls | | 20 Faculty of Tourism |
| | 2 Department of Civil Engineering | | 21 Foreign Language & English Preparatory School and Annex |
| | 3 Department of Computer Engineering | | 22 Foreign Lang. & English Prep. School, Modern Language Division |
| | 4 Department of Electrical & Electronic Engineering | | 23 Institute of Graduate Studies & Research |
| | 5 Department of Fine Arts Education | | 24 Prosthetics Orthotics and Biomechanics Center |
| | 6 Department of Mechanical Engineering | | 25 Rector's Office |
| | 7 Eastern Mediterranean Doğa College | | 26 School of Computing & Technology |
| | 8 Eastern Mediterranean Doğa Primary School | | 27 Visual Arts & Visual Communication Design - Techno Park |
| | 9 Faculty of Architecture | | 28 Akdeniz Dormitory |
| | 10 Faculty of Arts & Sciences | | 29 Alfam Dormitory |
| | 11 Faculty of Business & Economics- School of Business & Finance | | 30 Alfam Vista Dormitory |
| | 12 Faculty of Communication & Media Studies | | 31 Astra Plus Dormitory |
| | 13 Faculty of Dentistry | | 32 EMU 1 Dormitory |
| | 14 Faculty of Education | | 33 EMU 2 Dormitory - EMU Dormitory Directorate Office |
| | 15 Faculty of Engineering - Department of Industrial Engineering | | 34 EMU 3 Dormitory |
| | 16 Faculty of Health Sciences - School of Health Services | | 35 EMU 4 Dormitory |
| | 17 Faculty of Law - School of Justice | | 36 Golden Plus Dormitory |
| | 18 Faculty of Medicine - Clinical Application Center | | 37 Grand Aras Dormitory |
| | 19 Faculty of Pharmacy | | |



<http://bit.ly/emucampusmap>



- | | | |
|----------------|-----------------|----------|
| Academic | Food Facilities | ATM |
| Dormitory | Kiosk | Bank |
| Administrative | Post Office | Security |
| Entrance | | |

1800 meters ahead



EMU

ap

WHEELCHAIR ACCESS INFORMATION

- | | |
|--------------------------------------------------------|-----------------------------------------|
| Full access to all floors | Entrance with ramp |
| Mostly Accessible | Slope over 10% |
| Ground floor only | Car parking space for disabled drivers |
| Toilets accessible to wheelchair users within building | Entrance suitable for wheelchair access |

- | | |
|--|-----------------------------------------------------|
| | 38 Halide Edip Guest House - I |
| | 39 Inn Dorm Dormitory |
| | 40 Kamacioğlu Dormitory |
| | 41 Longson Dormitory |
| | 42 Marmara Dormitory |
| | 43 Namık Kemal Guest House - II |
| | 44 Novel Centrepont Dormitory |
| | 45 Nural Dormitory |
| | 46 Pop Art Dormitory |
| | 47 Prime Living Dormitory |
| | 48 Ramen Dormitory |
| | 49 Sabancı Dormitory |
| | 50 T.C. Yurtkur Necmettin Erbakan Dormitory Block 1 |
| | 51 T.C. Yurtkur Necmettin Erbakan Dormitory Block 2 |
| | 52 Uğursal Dormitory |
| | 53 Accounting Affairs & Personnel Affairs |
| | 54 Administrative Facilities |
| | 55 Animal Shelter |

- | | |
|--|------------------------------------------------------------------|
| | 56 EMU Beach Club |
| | 57 Church |
| | 58 Computer Center |
| | 59 Continuing Education Center - Total Quality Management Center |
| | 60 Health Center - Psy. Counselling Guid. & Res. Center |
| | 61 International Office |
| | 62 Lala Mustafa Paşa Sports Complex |
| | 63 Library |
| | 64 Mosque |
| | 65 Open Air Sports Facilities |
| | 66 Rauf Raif Denktaş Culture and Congress Center |
| | 67 Registrar's Office |
| | 68 Social & Cultural Activities Center - EMU Coop Ltd. |
| | 69 Stadium |
| | 70 Table d'hote Restaurant - Lapprenti |
| | 71 Technical Affairs |



LIFE IN EMU

Accommodation

EMU has standard EMU dormitories, privately owned dormitories and other dormitories located on campus. B.O.T dorms also have options for those who wish to stay in single rooms, as well as options for small families. Dormitories are generally equipped with:



Kitchen



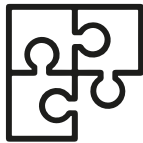
Spor Salonu



Cafeteria



Study Area



Game Area



Storage Area



TV Room



Cinema



Laundry Rooms



Currency Office



Markets



Security 7/24

Transportation

The university-owned free shuttle services are available on campus and between the campus and the city center throughout the year. This allows students who live off-campus to easily attend their classes.

Internet

Free Wi-Fi is available at almost every spot of the campus.

Health Center

Free health services including internal medicine, dermatology, dentistry, E.N.T, gynecology, psychiatry, urology, ophthalmology, Also, EMU-PDRAM offers free and confidential services to assist students that may be experiencing difficulties studying due to personal or social.

Halls

Rauf Raif Denktaş Culture and Congress Center houses convention and conference rooms, exhibition halls, museums and art workshops. The building is the biggest culture and congress center throughout the region.

Sports

The sports facilities are accessible to all students for sports like volleyball, basketball, athletics, tennis, handball, billiards, chess, wrestling, cycling, table tennis, triathlon, football, soccer, futsal, squash, gymnastics, bodybuilding, cardio and many more.

Canteen and Cafeteria

They are 35 in number and ready to provide you with quality service and diverse cuisines. Some may also offer monthly plans with up to 3 course meals at a very affordable price.

#Christmas and
New Year



#Welcome Nights



#Architecture Des



#Tourism
Days



#Sand Sculpture



#International Night



#Cultural
Night



#Career Days



#ENUT Civic
Involvement



igh Week



#Social Media and Brand Week



#Rock ENCA



#Library / Book Day



#Sports Tournaments



#Graduation Ceremony

North Cyprus



About North Cyprus

The Turkish Republic of North Cyprus is a natural paradise in Cyprus, often referred to as the jewel of the Mediterranean Region and home to innumerable legends that will fill you with wonder.

The friendly locals and endless adventures of the island are waiting to be discovered and you cannot afford to miss any of them, so get ready for an exciting experience.

Major Cities



Mağusa / Famagusta

Walled City of Famagusta
Othello Castle
Namik Kemal Dungeon & Museum
Salamis Ruins with its Bath House,
Gymnasium, and Theatre
Saint Barnabas Church
Amazing Sea Shores



Girne / Kyrenia

Saint Hilarion Castle
Bellapais Monastery
Kyrenia Castle
Kyrenia Harbor
Buffavento Beach
Turtle Beach



Lefkoşa / Nicosia

Walled Old City
Selimiye Mosque
Bedastan
Great Inn (Caravanserai)
Lapidary Museum
Colonial Law Courts
Dereboyu



Karpaz / Karpasia

Karpasia Peninsula
Karpaz National Park
Apostolos Andreas Monastery
Kantara Castle



Lefke / Lefka

Soli Ancient City
Vuni Palace view
Petra Tou Limnidi
Acendu Fountain

Cost of Living



Housing
\$1200-3000/year



Food
\$300-400/month



Free EMU bus
services in
Famagusta



Phone registration
(if imported) 14%
of value



Entertainment
\$100/month



1 year
Health Insurance
\$100-110

At a Glance



Official Name: (TRNC)
Turkish Republic of
Northern Cyprus



Official currency is Turkish Lira,
however USD, Euro and Sterling
are acceptable



Country Code: 0090
Area Code: 0392



Mild and refreshing weather
with short cold winter,
hot summer



Driving is on
the left lane



Capital:
Lefkoşa^(TR)
Nicosia^(ENG)



Official language is
Turkish but English is
widely spoken



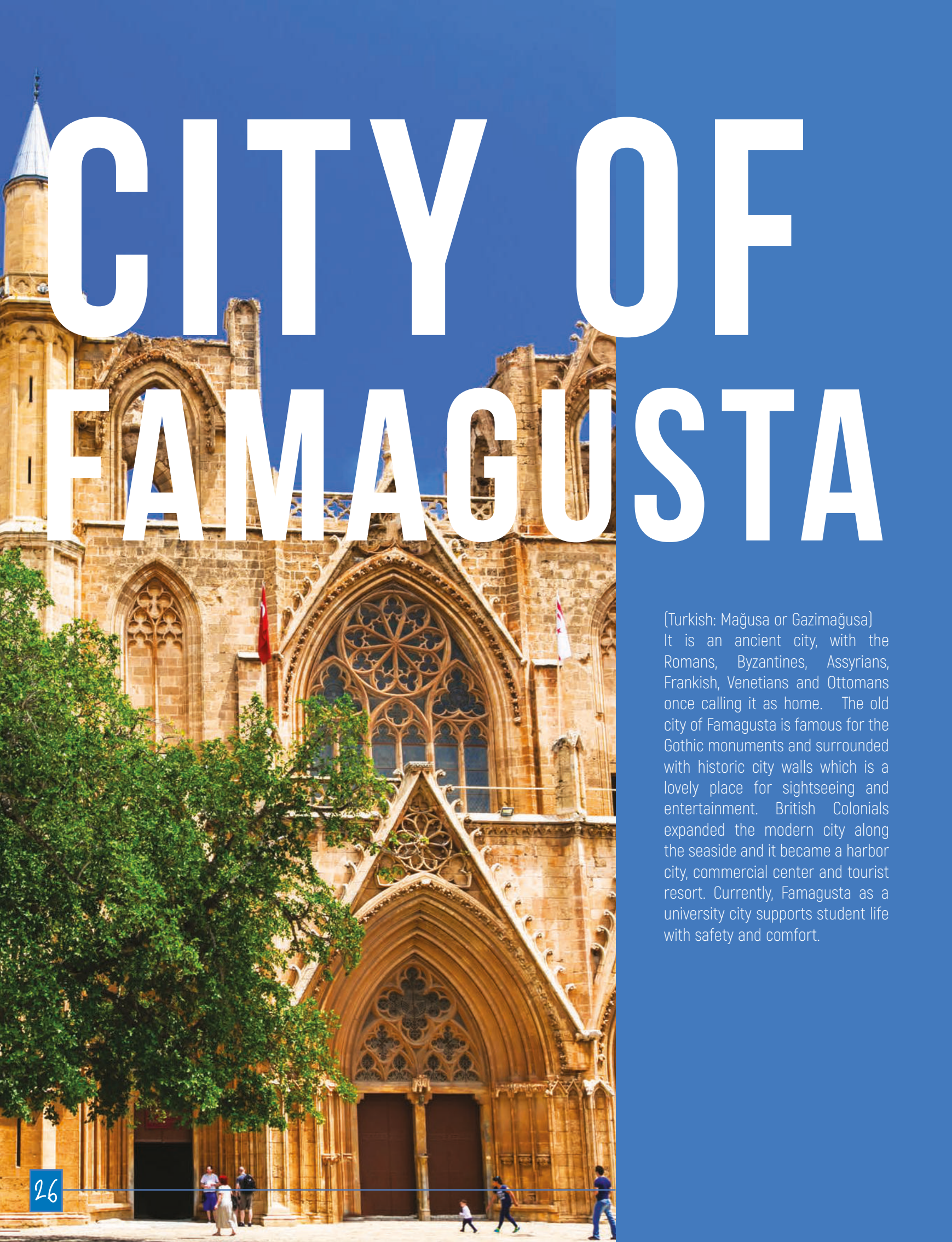
The Middle East,
Eastern part of the
Mediterranean Sea



Annual
Temperature
10-35°C



Time zone: UTC +2:00
(in summer: UTC +3:00)



CITY OF FAMAGUSTA

[Turkish: Mağusa or Gazimağusa]

It is an ancient city, with the Romans, Byzantines, Assyrians, Frankish, Venetians and Ottomans once calling it as home. The old city of Famagusta is famous for the Gothic monuments and surrounded with historic city walls which is a lovely place for sightseeing and entertainment. British Colonials expanded the modern city along the seaside and it became a harbor city, commercial center and tourist resort. Currently, Famagusta as a university city supports student life with safety and comfort.

Night Life

The exciting night life filled with entertainment and delights along with the friendly hospitality of the locals ensures a gracious welcome and an unforgettable experience.

Theater

Throughout the year, theatrical performances are held at the EMU Cultural and Congress Center and the Municipality Theater. Some theater shows are performed at Othello Castle and Salamis Antique Theater.

International Famagusta Art & Culture Festival

The festival takes place during July and includes a line-up of everything from classical and jazz to hip-hop, modern rock and reggae, performed by international and local artists.

Folklore

Famagusta also boasts myriad myths and legends borrowed from different cultures or originating from the soil. The Turkish Cypriot culture also incorporates a great diversity of folk dances with various influences.

Cuisine

North Cyprus cuisine is quite varied, with many dishes featuring meat and vegetables to encompass the healthy Mediterranean diet. The local cuisine is an extension of the locals' hospitality.



Note:



You can send us all your questions using
the Live Chat option on our website

www.emu.edu.tr

+ you may also
contact us via
our following

Whatsapp
Lines

English

+90 533 857 54 18

Arabic

+90 533 820 81 81



emu.edu.tr



[eastern.med.univ](https://www.facebook.com/eastern.med.univ)



[emuofficial](https://www.instagram.com/emuofficial)



[emuofficial](https://twitter.com/emuofficial)



[+90 392 630 11 57-24 44](tel:+9039263011572444)



international.center@emu.edu.tr



grad.emu.edu.tr

